

West Point Lake

VISIT LAGRANGE GEORGIA






Oakfuskee Conservation Center

DOWNTOWN

This inset map provides a detailed view of downtown LaGrange. It shows a grid of streets including Springdale Dr, Ben Hill St, Gordon St, Broad St, Vernon St, Alford St, Harwell Ave, S Greenwood St, S Lewis St, Bull St, Main St, Pine St, Ashton St, and Pierce St. Key landmarks are marked with blue dots: Sweetland Amphitheatre, Bellevue Mansion, LaGrange College, Courtyard By Marriott, Charlie Joseph's, Legacy Museum On Main, Nutwood Winery Restaurant & Wine Bar, Wild Leap Brew Co., and Southbend Park. The Visitor Center is marked with a red dot. The map also shows the intersection of US-27, US-29, and US-14.

LEGEND

-  Interstate
-  Highway
-  State Route
-  Points of Interest
-  Visitor Center
-  Downtown
-  The Thread

The Thread is a network of multi-use trails and greenways designed to be a sustainable and pedestrian-friendly connector between the city's neighborhoods, public parks, and commercial businesses.

West Point Lake Area

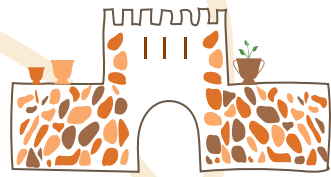
This section of the map shows the scenic West Point Lake area. It includes Highland Marina, Highland Country Club, and Cameron Mill Rd. The lake is depicted with various water activities like fishing and kayaking, and is surrounded by lush greenery and trees. The map also shows the intersection of US-29 and US-14.

Downtown Core

This central area of the map highlights the downtown core. It features Granger Park, Sweetland Amphitheatre, the Visitor Center, LaGrange College, and the Historic Vernon district. Streets shown include N Greenwood St, Broad St, Battle St, Church St, Bull St, Main St, and W Mulberry St. The map also shows the intersection of US-27 and US-109.

Industrial Park District

This section of the map shows the Industrial Park District and surrounding areas. It includes the LaGrange Callaway Airport, Callaway Memorial Tower, Mulberry Street Cemetery, and Nutwood Winery. Streets shown include W Lukken Industrial Dr, Gordon Commercial Dr, Hammett Line Rd, Clark St, Jackson St, Brownwood Ave, Hillside, Forrester Ave, Dallas St, W Mulberry St, Colquitt St, Ragland St, Cooley Rd, Upper Big Springs Rd, and Vulcan Materials Rd. The map also shows the intersection of US-27, US-85, and US-185.



Biblical History Center

The ultimate time-travel experience, Biblical History Center presents an interactive peek into Biblical history. Discover the greatest stories ever told!

130 Gordon Commercial Drive | LaGrange, GA 30240
(706) 885-0363



Hills & Dales Estate

Explore meticulously preserved gardens and stunning architecture dating back over 175 years, offering a breathtaking glimpse into the legacy of the Callaway family.

1916 Hills and Dales Drive | LaGrange, GA 30240
(706) 882-3242



complimentary
DESTINATION GUIDE

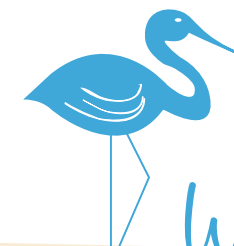
Our destination guide is the perfect companion for your adventures in LaGrange. Find it at the visitor center, or on visitlagrange.com!



Great Wolf Lodge

Gather your wolf pack and dive into endless fun at Great Wolf Lodge. With 100,000 square-feet of water slides, themed suites, onsite restaurants, and a world of play, it's sure to be a howlin' good time.

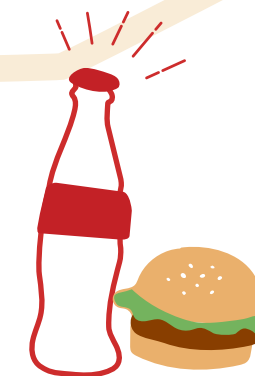
150 Tom Hall Pkwy | LaGrange, GA 30240
(844) 473-9653



West Point Lake

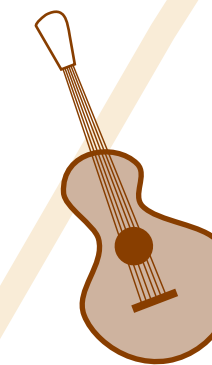
With 525 miles of scenic shoreline and abundant outdoor activities like fishing, boating, and hiking, West Point Lake offers your very own private adventure.

1000 Seminole Rd | LaGrange, GA 30240
(706) 882-3242



Find your flavor at visitlagrange.com to learn more about our restaurants, wineries, and breweries.

VISITLAGRANGE.COM



Sweetland Amphitheatre

Conveniently located near downtown LaGrange's restaurants, shops and local attractions, this 2,500-seat outdoor venue offers an intimate setting for star-studded musical performances and community events.

110 Smith Street | LaGrange, GA 30240
(706) 883-2058



Nutwood Winery
1339 Upper Big Springs Road
LaGrange, GA 30241
(706) 882-5295



*Nutwood Winery
Restaurant & Wine Bar*
300 Main Street
LaGrange, GA 30240
(762) 308-1815

SEASONAL EVENTS



WINTER
(DECEMBER - FEBRUARY)

SWEETLAND ON ICE

The magic of winter is skating under starry skies at Sweetland on Ice. Warm up by fire pits with gourmet hot cocoa and take in a family flick during weekly movie nights!

HILLS & DALES HOLIDAY HOME TOURS

Experience timeless Christmas charm at the Callaway family home, adorned inside and out with fresh greenery and a grand vintage-style tree. Tour and delight in fragrances of real Fraser fir and gingerbread, while classic Christmas melodies fill the air.



SPRING
(MARCH - MAY)

AZALEA STORYTELLING FESTIVAL

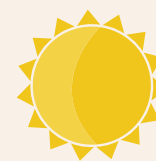
Every spring, LaGrange comes alive with enchanting tales spun by some of the nation's top storytellers, highlighting the art of oral tradition.

ROMAN ARMY DAY

Visitors can step into the world of Biblical life alongside Roman soldiers. Take in their good banter, learn about their weapons and tactics, break bread, weave bracelets and so much more.

LAGRANGE CYCLING CLASSIC

Catch the thrill of professional cycling as riders blaze the streets of downtown LaGrange, showcasing their speed and skill at this premier annual event.



SUMMER
(JUNE - AUGUST)

SWEETLAND CONCERT SERIES

From country to rock, pop to hip-hop, Sweetland's summer lineup packs out this 2,500-seat venue every year.

FIREWORKS AT PYNE ROAD PARK

West Point Lake is a stunning backdrop for an unforgettable show of fireworks dazzling the sky over Pyne Road Park.

WILD LEAP SUMMER LUAU

Tropical vibes and fun times collide in the heart of LaGrange! Celebrate summer with refreshing cocktails, live music, and island-inspired festivities at this award-winning brewery.



FALL
(SEPTEMBER - NOVEMBER)

STORIES IN THE GARDEN

Delight in enchanting tales shared beneath the canopy of a pecan grove at this annual free event. Presented by the Azalea Storytelling Festival in collaboration with Hills & Dales Estate.

STRANGE LAGRANGE TOURS

Led by Southern spirit guide Lewis Powell, this walking tour is a thrilling combination of a haunt jaunt and history lesson, offering an up-close and personal exploration of the city.

ABBOTSFORD FARMS PUMPKIN PATCH

Abbottsford Farms offers fantastic fall adventures with its scenic pumpkin patch, hay rides, sunflower field, and more. Free admission and delectable autumn treats like pumpkin bread make this a must-visit.