



# Four Cities Century 103 Mile Loop

Starting and finishing in LaGrange, this century ride features scenic backroads, historic sites, river and lake crossings and much more! Along with the cities of LaGrange, Mountville, West Point and Hogansville, other highlights include Kia Motors manufacturing facility, Chattahoochee River, West Point Dam and West Point Lake.

- Start at the LaFayette Square
- 4,800 ft. elevation change
- Finish at the LaFayette Square

**HOGANSVILLE**

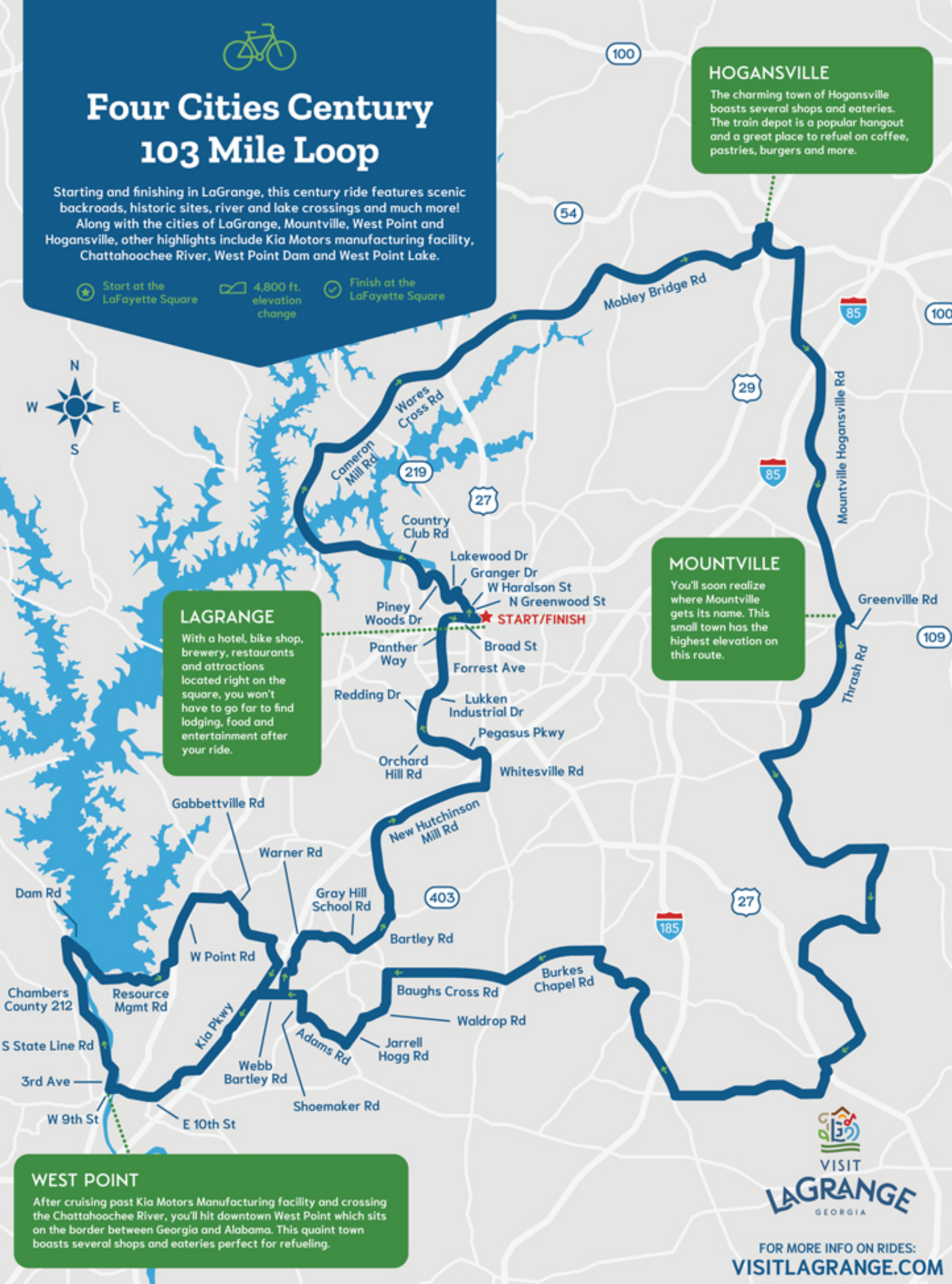
The charming town of Hogansville boasts several shops and eateries. The train depot is a popular hangout and a great place to refuel on coffee, pastries, burgers and more.

**MOUNTVILLE**

You'll soon realize where Mountville gets its name. This small town has the highest elevation on this route.

**LAGRANGE**

With a hotel, bike shop, brewery, restaurants and attractions located right on the square, you won't have to go far to find lodging, food and entertainment after your ride.



**WEST POINT**

After cruising past Kia Motors Manufacturing facility and crossing the Chattahoochee River, you'll hit downtown West Point which sits on the border between Georgia and Alabama. This quaint town boasts several shops and eateries perfect for refueling.



FOR MORE INFO ON RIDES:  
[VISITLAGRANGE.COM](http://VISITLAGRANGE.COM)